

PCI RATING

DESCRIPTION

100



Rating 100-90

New Pavement, structurally sound with minimum defects.

90



Rating 90-80

Oxidation and weathering occurring; pavement no longer black in color. Weathering causing a loss of fines.

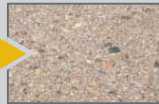
80



Rating 80-70

Loss of pavement fines increases. Surface cracks and few structural cracks present.

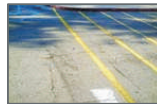
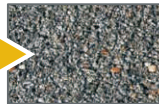
70



Rating 70-65

Loss of pavement fines increases. Increasing number of cracks present. Other pavement failures present but minimal.

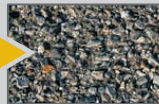
65



Rating 65-60

Loss of pavement fines increases. Increasing number of cracks present. Other pavement failures present but minimal.

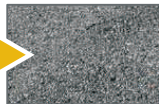
60



Rating 60-50

Pavement surface showing exposed larger aggregate from original asphalt mix due to loss of fines. Surface cracks present both structural and non-structural. Water penetration causing base failure usually isolated to drainage issues identified on pavement.

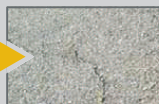
50



Rating 50-45

Surface cracks increasing in number. Several cracks spreading outward due to base failure from water penetration. Several types of pavement failure present.

45



Rating 45-40

Surface cracks increasing in number. Several cracks spreading outward due to base failure from water penetration. Several types of pavement failure present.

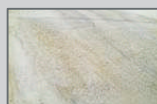
40



Rating 40-30

Several areas of pavement failure present due to water penetration. Base failure increasing in size and number. Structural cracks usually "cupped" and depressed due to loss of base material from water pumping as traffic drives over water filled cracks.

30



Rating 30-20

Pavement failure areas increase in number and size. Structural integrity lost.

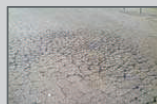
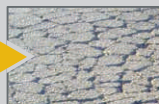
20



Rating 20-15

Pavement failure areas increase in number and size. Structural integrity lost.

15



Rating 15-0

Pavement failure areas increase in number and size. Structural integrity lost.

Where to use **ULTIMAT**

Where to use **ULTIMAT**